



# Newcastle and Maitland Region 2024 Education Handbook

## Purpose

The purpose of the 2024 community handbook is to provide club administrators and volunteers the most valuable information for their club in one easy location. Community Coach, safety education course lists, Tackle Ready deliverer training & information on the re-accreditation processes. In addition insightful information on where to find support, club tool kits, policies and guidelines to help answer any questions you might receive as a volunteer around the ground.

For any questions on the below, please contact your local NRL Game Development staff:

Name	Role	Mobile	Email
Paddy Haycock	NRL Game Development Officer – Education	0477 907 652	<a href="mailto:phaycock@nrl.com.au">phaycock@nrl.com.au</a>
Luke Lawrence	NRL Game Development Officer – School Participation	0402 892 487	<a href="mailto:llawrence@nrl.com.au">llawrence@nrl.com.au</a>
Brianna Ritchie	NRL Game Development Officer – School Recruitment	0487 432 293	<a href="mailto:britchie@nrl.com.au">britchie@nrl.com.au</a>
Daniel Swan	NRL Education Delivery Lead	0408 907 125	<a href="mailto:dswan@nrl.com.au">dswan@nrl.com.au</a>
Michelle Graham	NSWRL League and Club Support		<a href="#">NSWRL Newcastle Maitland Region (zendesk.com)</a>

## Online Coaching Modules

A new or returning coach with an expired accreditation must complete a NRL delivered *Community Coach Face to Face Workshop*. This is required to be completed before June 30 to be able to be registered and insured to coach a community Rugby League team in 2024.

They must complete the online modules for the relevant age group they are coaching and then enrol to the desired face-to-face workshop. For coaches whose accreditation has expired in the last twelve months, they can complete the eLearning Modules below

Age Group	Modules	Workshop Required?
U6s –U7s	<a href="#">(6-7) eLearning</a>	Yes (6-12 Workshop)
U8s – U9s	<a href="#">(8-9) eLearning</a>	Yes (6-12 Workshop)
U10s – U12s	<a href="#">(10-12) eLearning</a>	Yes (6-12 Workshop)
U13s – U15s	<a href="#">(13-15) eLearning</a>	Yes (13-18 Workshop)
U16s – U18s	<a href="#">(16-18) eLearning</a>	Yes (13-18 Workshop)
19+	<a href="#">(19+) eLearning</a>	No

# Community Coach Workshops

**NRL VOLUNTEER** - Do you need a course? Follow the steps to become a Community Coach

## 6-12 years Community Coach

1 [\(6-7\) eLearning](#)

[\(8-9\) eLearning](#)

[\(10-12\) eLearning](#)

## 13-18 years Community Coach

1 [\(13-15\) eLearning](#)

[\(16-18\) eLearning](#)

## 19's + Community Coach

1 [\(19+\) eLearning](#)

2 **(6-12) Face-to-Face Workshop**

Cost- **\$20.00**

3.5 hours face to face

Minimum age – 16

[\(6-12's\) Coach Workshop](#)

2 **(13-18) Face-to-Face Workshop**

Cost- **\$20.00**

3.5 hours face to face

Minimum age – 18

[\(13-18's\) Coach Workshop](#)

2 **Face to Face not required.**

Option to attend-  
**13-18's workshop.**

3

[Register for your club -](#)

[Register for your club!](#)

## Re-accreditation courses -

These courses are based on the age group you are coaching and will provide you with that age groups community coach accreditation for a further 4-year period. Coaches can complete multiple age groups if they wish.

**Complete the below eLearning:**

## 6-7's Re-accreditation

[Coach Re-accreditation \(6-7\)](#)

## 8-9's Re-accreditation

[Coach Re-accreditation \(8-9\)](#)

## 10-12's Re-accreditation

[Coach Re-accreditation \(10-12\)](#)

## 13-15's Re-accreditation

[Coach Re-accreditation \(13-15\)](#)

## 16-18's Re-accreditation

[Coach Re-accreditation \(16-18\)](#)

## Community Coach Workshops (6 – 12)

Day/Date/Time	Location	Link to Register
Saturday, 20 <sup>th</sup> April 2024	John Balcombe Field, Dudley	<a href="#">Dudley Course 6-12</a>
Monday, 29 <sup>th</sup> April 2024	Mount View Park, Cessnock	<a href="#">Cessnock Course 6-12</a>
Monday, 13 <sup>th</sup> May 2024	Keith Barry Oval, Toronto	<a href="#">Toronto Course 6-12</a>
Monday, 27 <sup>th</sup> May 2024	Salamander Sports Complex, Salamander Bay	<a href="#">Salamander Course 6-12</a>
Sunday, 16 <sup>th</sup> June 2024	John Balcombe Field, Dudley	<a href="#">Dudley Course 6-12</a>

## Community Coach Workshops (13 – 18)

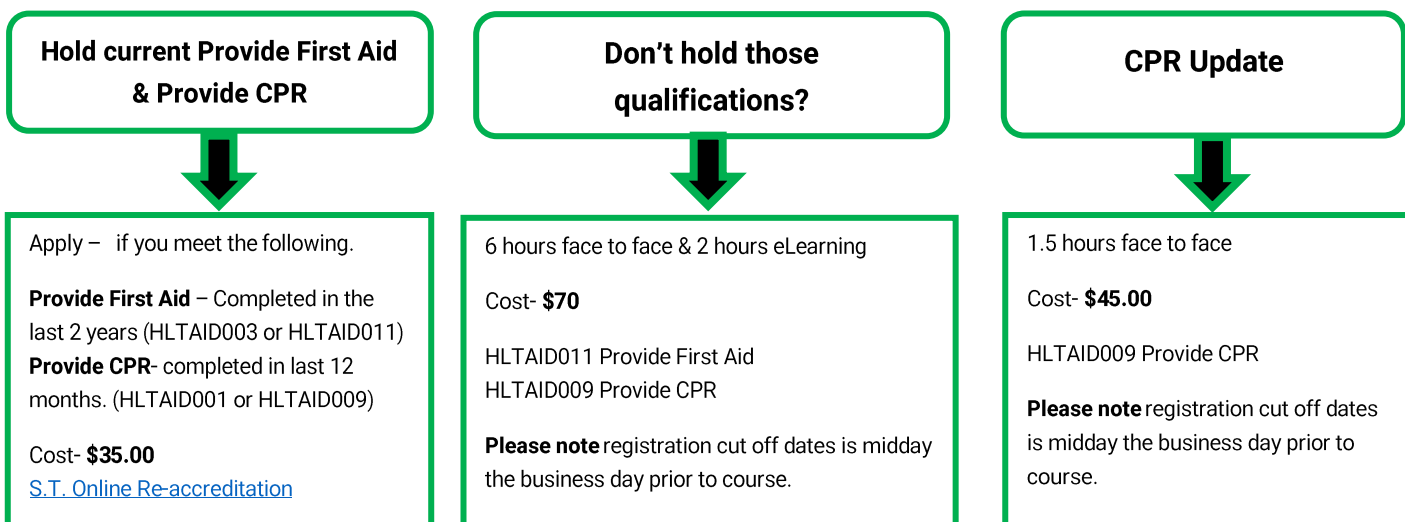
Day/Date/Time	Location	Link to Register
Saturday, 20 <sup>th</sup> April 2024	John Balcombe Field, Dudley	<a href="#">Dudley Course 13-18</a>
Monday, 6 <sup>th</sup> May 2024	Mount View Park, Cessnock	<a href="#">Cessnock Course 13-18</a>
Monday, 20 <sup>th</sup> May 2024	Keith Barry Oval, Toronto	<a href="#">Toronto Course 13-18</a>
Monday, 3 <sup>rd</sup> June 2024	Salamander Sports Complex, Salamander Bay	<a href="#">Salamander Course 13-18</a>
Sunday, 16 <sup>th</sup> June 2024	John Balcombe Field, Dudley	<a href="#">Dudley Course 13-18</a>

# Safety Education

League Safe	League First Aid	Level 1 Trainer	Level 2 Trainer
Under 6's +	Under 6's-15's	Under 6's +	
<p>Online course</p> <p>Cost = <b>Free</b></p> <p>League Safe certificate</p> <p>No reaccrditionation</p> <p><a href="http://NRL Learning Centre - LeagueSafe (playrugbyleague.com)">NRL Learning Centre - LeagueSafe (playrugbyleague.com)</a></p>	<p>Up to 2 hours eLearning 8 hours Face to Face</p> <p>Cost = <b>\$90.00</b></p> <p>League First Aid HLTAID003- Provide First Aid HLTAID001 -Provide CPR</p> <p>Re-accrditionation – every 3 years</p> <p><a href="#">League First Aid</a></p>	<p>Up to 3 hours eLearning 12 hours Face to Face</p> <p>Cost = <b>\$180.00</b></p> <p>NRL Level 1 Sports Trainer HLTAID003 Provide First Aid HLTAID001 Provide CPR</p> <p>Re-accrditionation – every 3 years</p> <p><a href="#">Level 1 Sports Trainer</a></p>	<p>Up to 2 hours eLearning 16 hours Face to Face</p> <p>Cost = <b>\$350.00</b></p> <p>NRL Level 2 Sports Trainer</p> <p>Re-accrditionation – every 3 years</p> <p><a href="#">Level 2 Sports Trainer</a></p>

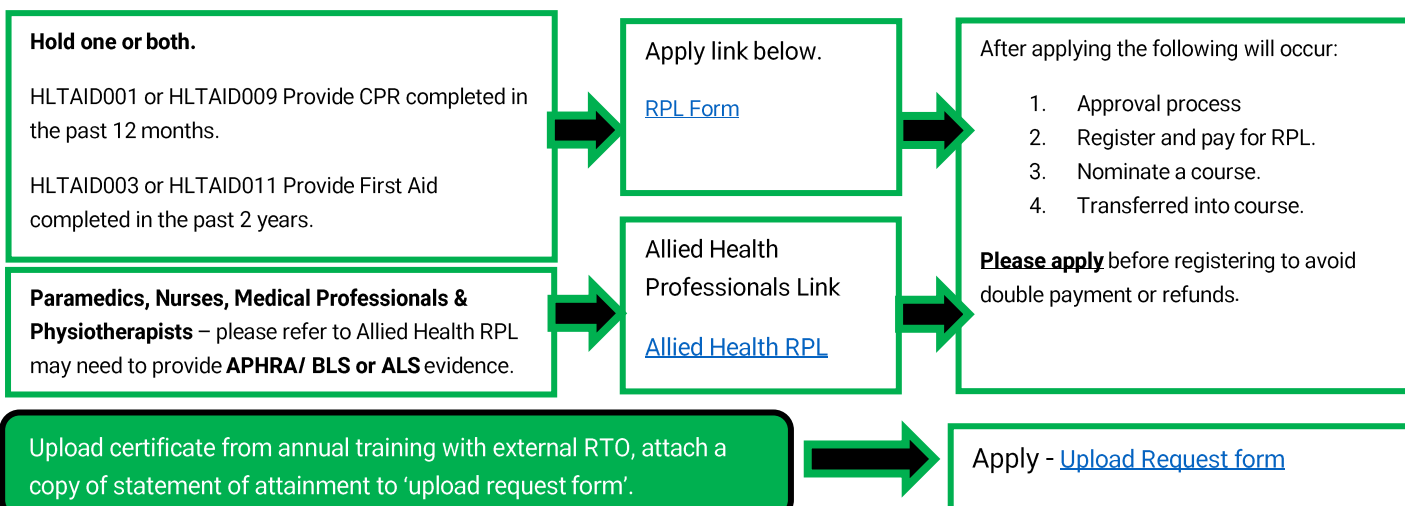
## After something else? Reaccrditionation / RPL/ Certificate upload

### Re-accrditionation Process (If your accrditionation has expired you **CANNOT** act in the role)



### RPL - Process

(RPL) is available to all candidates and will be assessed on a case-by case basis.



## Sports Trainer Course List

Please note courses will be uploaded onto the NRL Learning Centre after the previous course is full, this is to ensure courses are put on by demand in the area.

Location	Day's	Dates	Venue	Course Type	Link to Register
Beresfield	Saturday Sunday,	16 <sup>th</sup> March 17 <sup>th</sup> March	Beresfield Bowling club	Full Level 1 Sports Trainer Course	<a href="#">Click here to register.</a>
	Saturday	16 <sup>th</sup> March	Beresfield Bowling club	Level 1 Reaccreditation	<a href="#">Click here to register.</a>
	Saturday	16 <sup>th</sup> March	Beresfield Bowling club	Level 2 Reaccreditation	<a href="#">Click here to register.</a>
	Saturday	16 <sup>th</sup> March	Beresfield Bowling club	League First Aid	<a href="#">Click here to register.</a>
	Saturday	16 <sup>th</sup> March	Beresfield Bowling club	CPR Update	<a href="#">Click here to register.</a>
Newcastle	Saturday Sunday,	2 <sup>nd</sup> March 3 <sup>rd</sup> March			To be advised closer to date
Kurri Kurri	Saturday Sunday	6 <sup>th</sup> April 7 <sup>th</sup> April			To be advised closer to date
Salamander Bay	Saturday Sunday	4 <sup>th</sup> May 5 <sup>th</sup> May			To be advised closer to date
Newcastle	Saturday Sunday	18 <sup>th</sup> May 19 <sup>th</sup> May			To be advised closer to date

## Referee Accreditation (2024)

This is to be completed annually to keep your accreditation up to date for the current season. Accreditations in the referee space expire on June 30 the following season.

Referee Re-accreditation	6-12 Community	13-15 Community	16's + Community
<a href="#">Referee Re-accreditation</a>	<a href="#">Referee (6-12) eLearning</a>	<a href="#">Referee (13-15 Years) eLearning</a>	<a href="#">Referee (16+ Years) eLearning</a>

# Tackle Ready

Tackle Ready Deliverer- Become a Tackle Ready Deliverer for your Club.

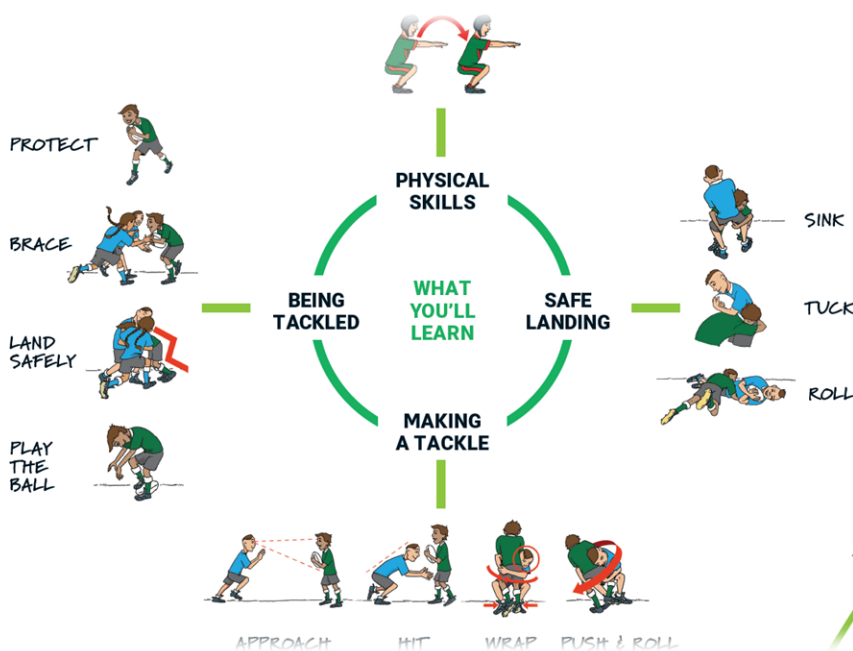
## WHY TACKLEREADY?

- 1** Strong focus on fundamental movement skills
- 2** Ensures the best possible introduction for this complex skill
- 3** A comprehensive education for new coaches
- 4** Reinforces the positive message of safety and player welfare
- 5** Utilises tried and tested activities and coaching practices
- 6** Staged approach to introducing complex skills
- 7** Increases player confidence and physical competence

## Tackle Ready Delivery Training

Link to Register interest

<https://forms.office.com/r/HazVFEEGWa>



A two-year program that lays the foundations for a lifelong involvement in Rugby League.

## NRL Community Tools

<p><b>Club Rugby League</b></p> <p>Direct access to everything you need in club land (policies, tools &amp; roles)</p>	<p><a href="#">Club Rugby League</a></p>
<p><b>Support</b></p> <p>Do you need help? Click on our helpful support links to either submit a request or find step by step guides on 'How to'.</p>	<p><a href="#">Submit a request - Contact</a></p> <p><a href="#">Play Rugby League Support-How to</a></p>
<p><b>Club Administration Courses</b></p> <p>Need to register for a course, find a location near you</p>	<p><a href="#">Course Catalogue</a></p>
<p><b>Club Rugby League Tool Kit</b></p> <p>An arrangement of marketing resources for your club to utilise. (Social media, videos, flyers etc)</p>	<p><a href="#">Club Rugby League Tool Kit</a></p>
<p><b>Be a volunteer we need YOU!</b></p> <p>Play your part and assist at your local club.</p>	<p><a href="#">Get involved in Rugby League</a></p>
<p><b>Safety Education Framework</b></p> <p>NRL's On-Field Policy, courses requirements, club guides.</p>	<p><a href="#">NRL Safety Education Club guide</a></p> <p><a href="#">NRL On-Field Policy</a></p>
<p><b>Coaching Resources</b></p> <p>Find coaching activity videos, handbooks, warm-up ideas</p>	<p><a href="#">Coaching Resources</a></p>
<p><b>Laws &amp; Policies</b></p> <p>Find the laws of the game, Safe Play code, code of conduct &amp; policies</p>	<p><a href="#">Laws &amp; Policies</a></p>
<p><b>NRL Policies</b></p> <p>See our large range of policies &amp; guidelines the NRL has to ensure we have a safe and fun environment.</p>	<p><a href="#">NRL Policies</a></p>
<p><b>Code of Conduct</b></p> <p>National Code of Conduct PDF version</p>	<p><a href="#">National Code of Conduct</a></p>
<p><b>Concussion Management</b></p> <p>This course provides the basics for all members understand concussion. (Recognise, respond to suspected players &amp; what happens next if a player has been diagnosed with a concussion)</p>	<p><a href="#">Concussion - Management and Return to Play Info</a></p> <p><b>Enrol:</b>  <a href="#">Concussion Management - Community and Participants (2024)</a></p>



## NSWRL Community Tools

<p><b><u>NSWRL Policies</u></b> Policies &amp; Procedures Manual</p>	<p><a href="#">NSWRL Policies</a></p>
<p><b><u>Code of Conduct</u></b> National Code of Conduct PDF version</p>	<p><a href="#">National Code of Conduct</a></p>
<p><b><u>Code of Conduct Incident Form</u></b> Need to report a Code of Conduct issue.</p>	<p><a href="#">CODE OF CONDUCT INCIDENT REPORT FORM</a></p>
<p><b><u>Head recognition &amp; Referral Form</u></b> A Level 1 or 2 Sports Trainer to fill in if they have recognised a player displaying and signs or symptoms of concussion</p>	<p><a href="#">Head Recognition &amp; Referral Form</a></p>
<p><b><u>Playing up in higher age consent form</u></b> Must be completed and submitted to the appropriate administrators</p>	<p><a href="#">Playing in higher age consent form</a></p>
<p><b><u>NSW Community Club Ground Manager Induction</u></b> Get a head start on your role as GM with the induction course, Including scenarios, training, tips and education of the platforms you have access to.</p>	<p><b>Enrol:</b> <a href="#">NSW Community Club Ground Manager Induction</a></p>
<p><b><u>Working with Children Checks</u></b> All volunteers including coaches, managers and trainers that are involved with children under the age of 18 are required to comply with the NSWRL policy around Working with Children.</p>	<p><a href="#">Apply for a Working with Children Check   Service NSW</a></p>
<p><b><u>Critical Incident Flow Chart</u></b> NSWRL Critical incident management plan.</p>	<p><a href="#">Critical Incident management</a></p>